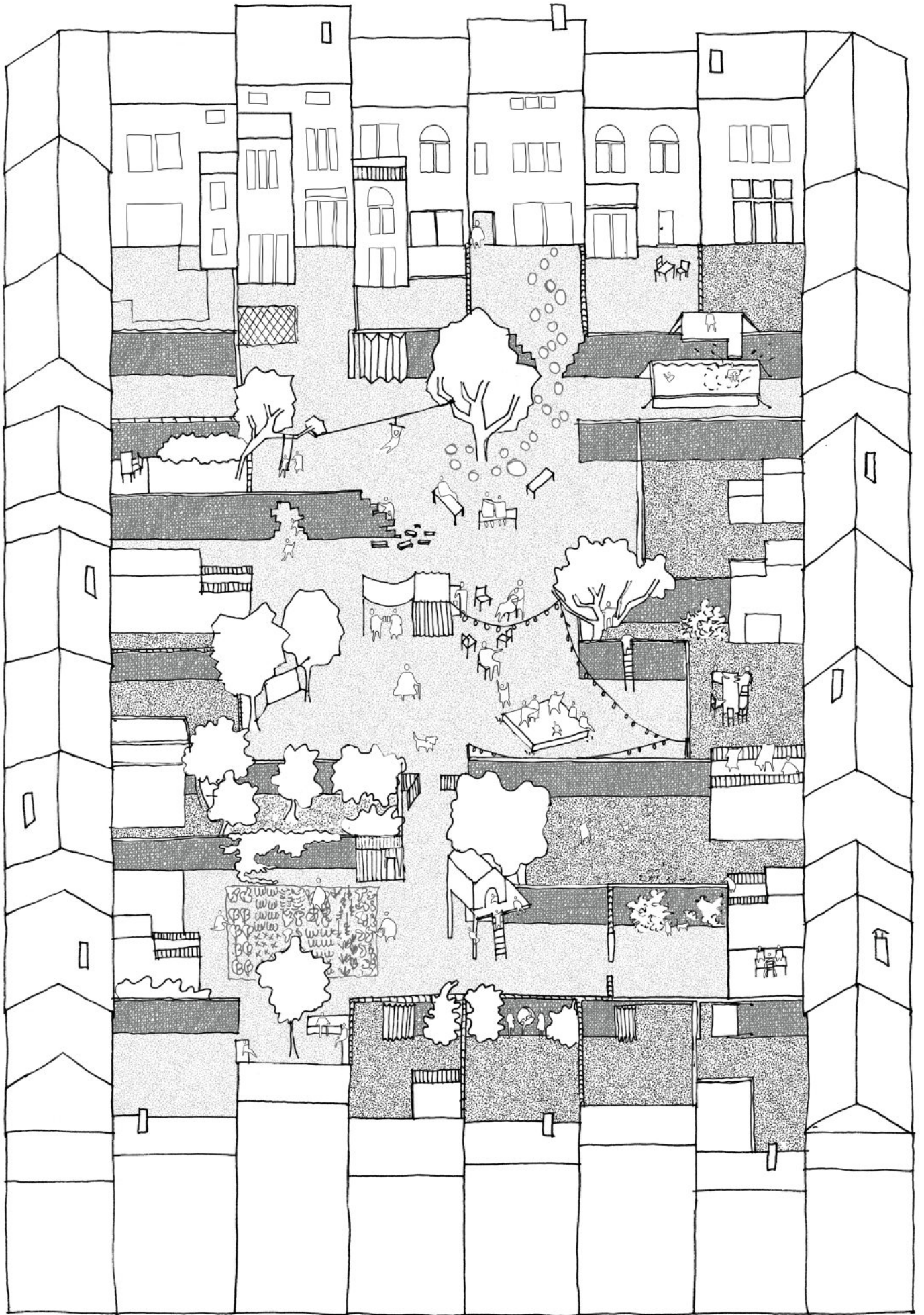


modlocq îlot

structure

proposition naïve d'un îlot imaginaire - le point de départ	4
introduction	6
contexte	
<i>orthophotoplan</i>	8
<i>plan de situation</i>	10
<i>une forteresse habitée</i>	12
<i>récoltes d'informations</i>	16
<i>maquette de site</i>	18
projections et axonométries abstraites	22
<i>dédale</i>	24
<i>en bout</i>	25
<i>d'un monde à l'autre</i>	26
<i>à-bandon</i>	27
<i>déchirure</i>	28
<i>partage des eaux 1.1</i>	29
<i>partage des eaux 2.1</i>	30
<i>partage des eaux 2.2</i>	31
temps et cohabitation	32
agora	33
arc - colonne - linteau	34
lien	36
Aalto	40
série de petits mondes qui s'ignorent	42
ambiance en intérieur d'îlot	44
les habitants d'en face ou cheers	48
maquette poétique du mur	50
herbier	54
fenêtre sur voisinage	56
entre terre et air	62
catwalk ou cat de surveillance ou catventures	64
enfance	66
papy patience	68
visions abstraites d'au-delà du mur	70

hypothèses	
<i>place au temps</i>	72
<i>ouverture(s)</i>	74
<i>un noeud commun</i>	76
<i>doublement du mur</i>	80
h'îlot techn. / scan d'oeil / avez-vous l'autorisation ?	78
le confessionnal	86
rideau	88
axonométries	98
remerciements	100



contexte

îlot Belgica - Jubilé - Hollevoet - Van Cauwenbergh

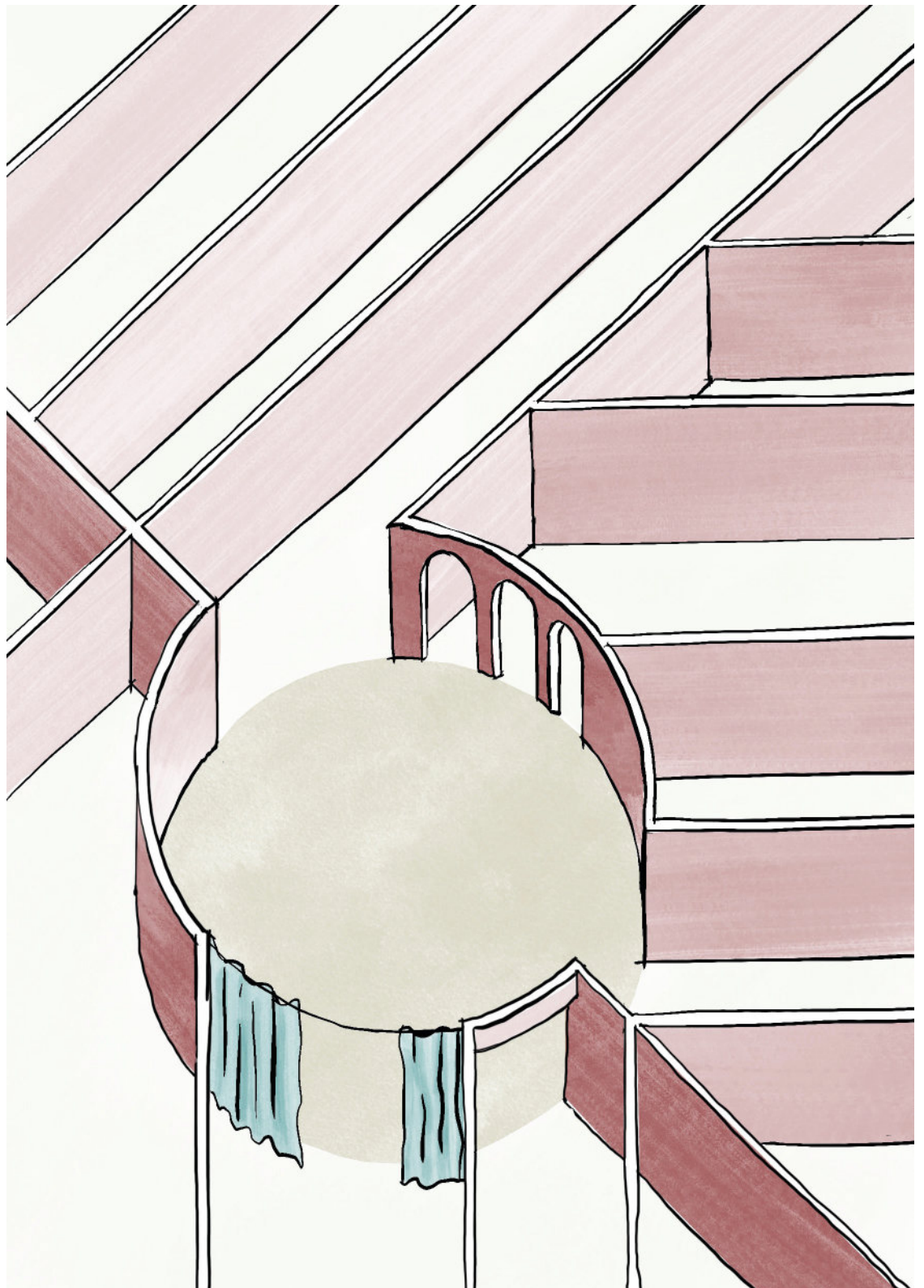
maquette au 1/200e - blocs d'isolant et jeunes pousses - socle en plâtre





agora

dessin sur tablette - format A5



lien

esquisses rapides sur tablette

franchir

voir

s'asseoir

grimper

entrer

passer

ouvrir

sentir

enjamber

se balancer

tourner

nager

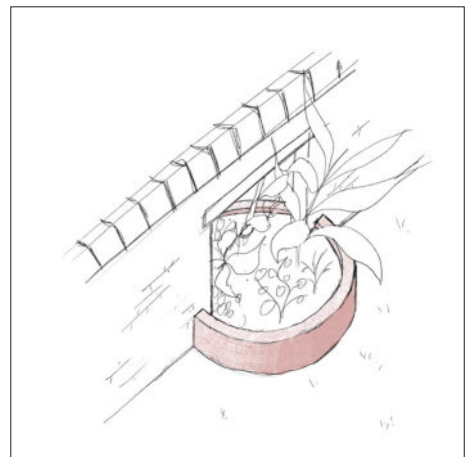
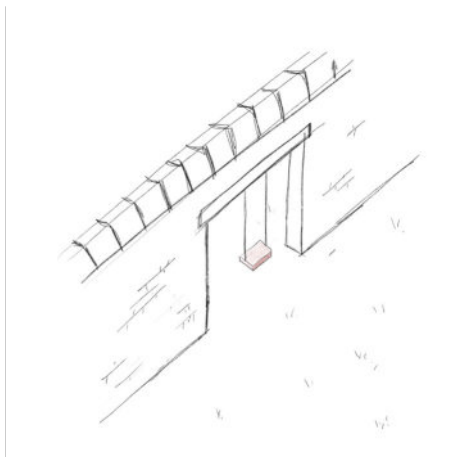
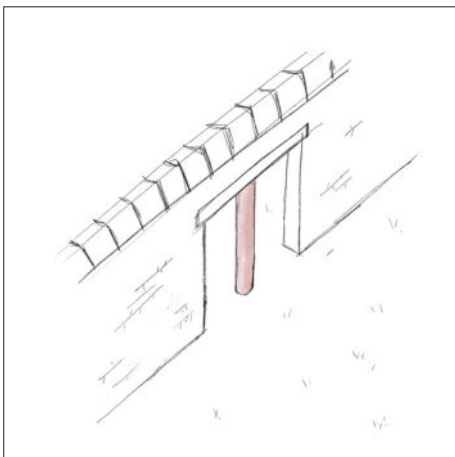
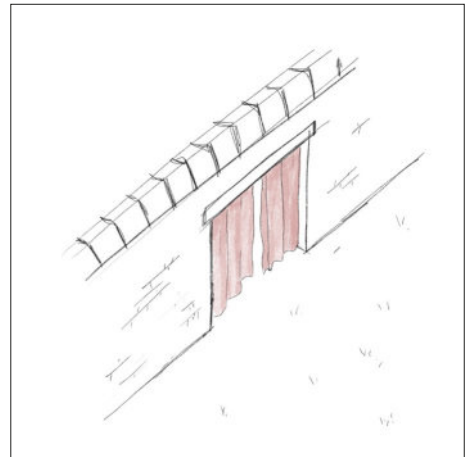
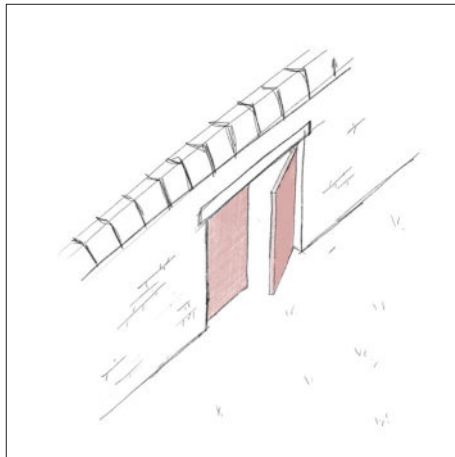
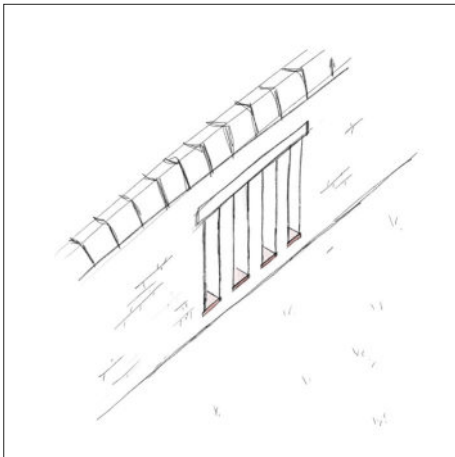
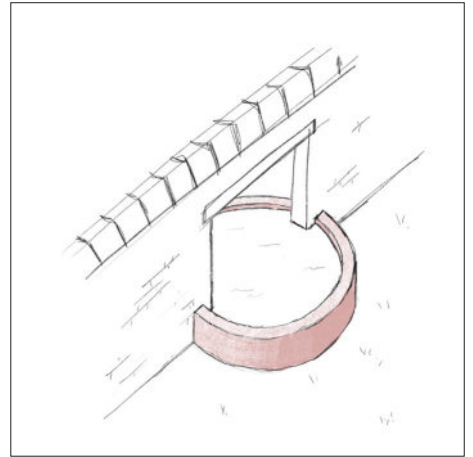
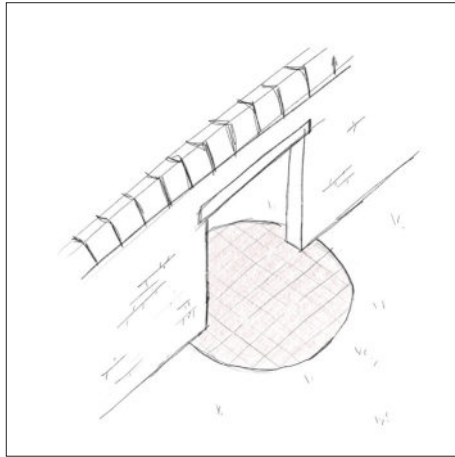
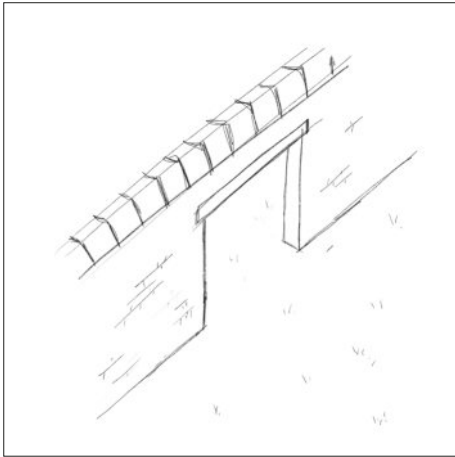
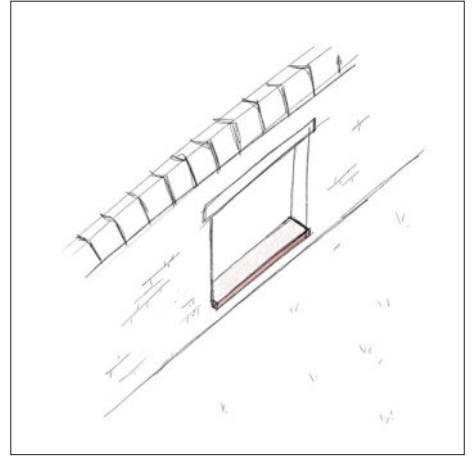
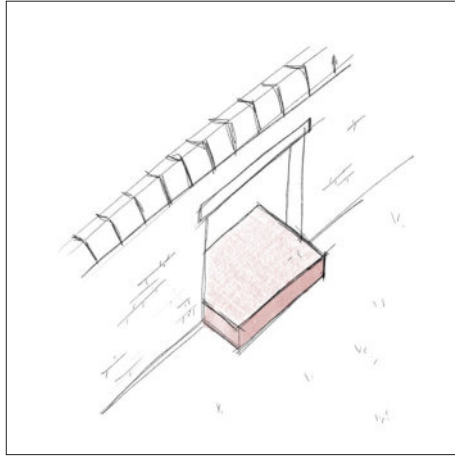
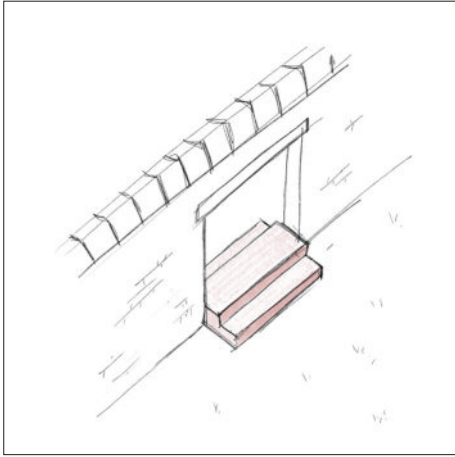
monter

dépasser

apercevoir

tirer

glisser



lever

pousser

construire

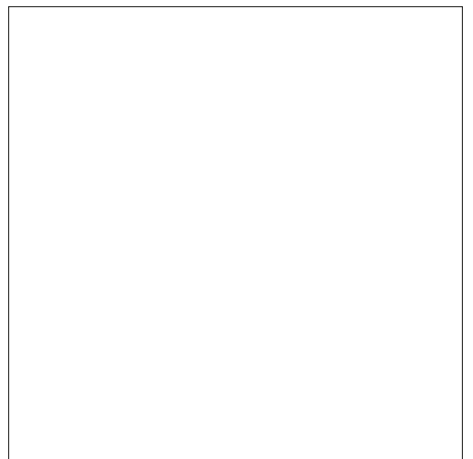
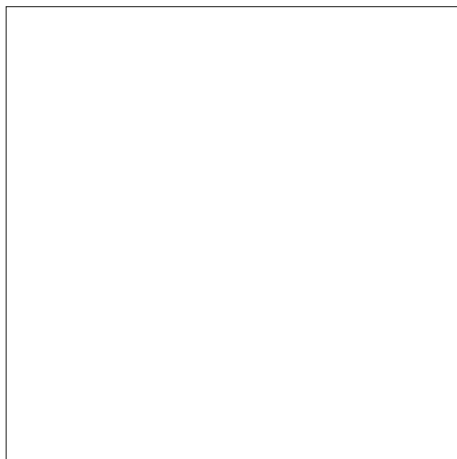
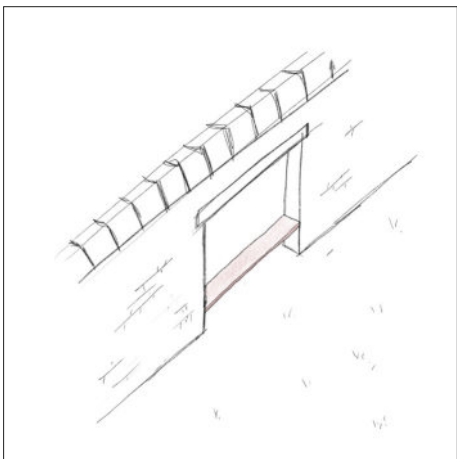
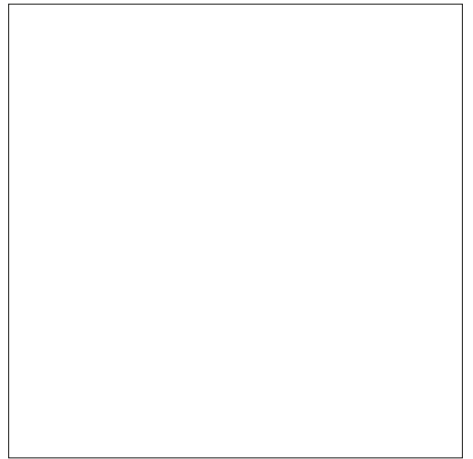
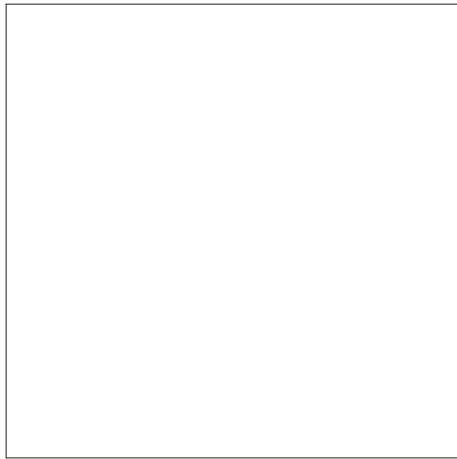
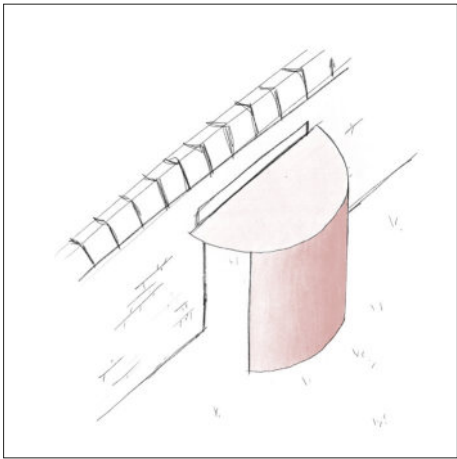
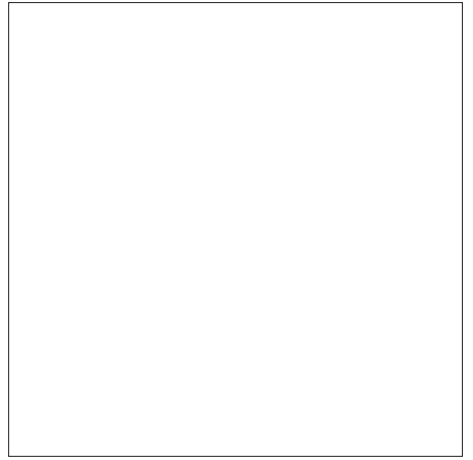
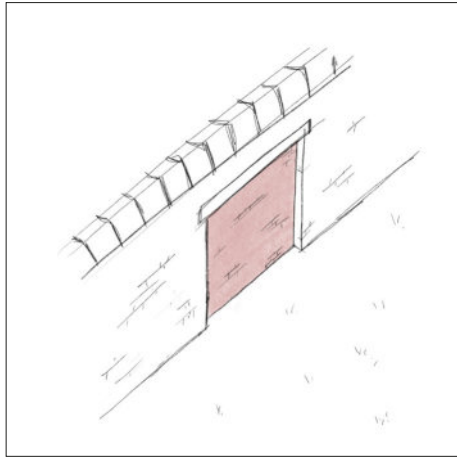
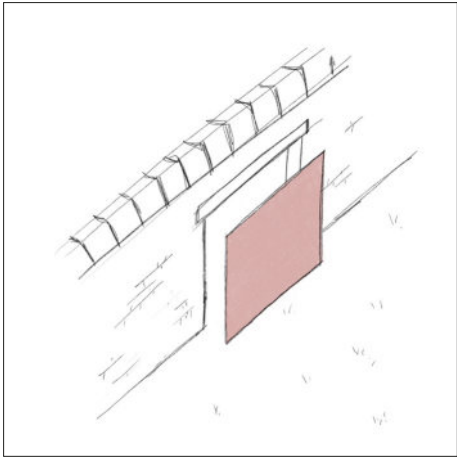
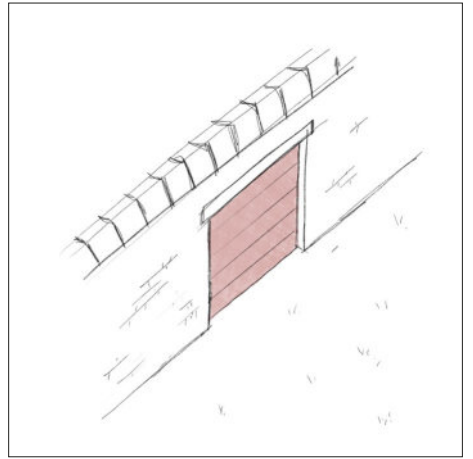
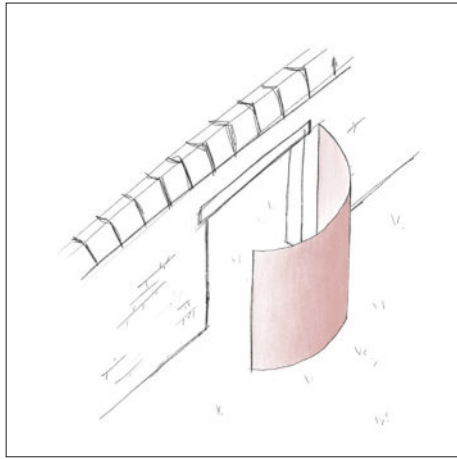
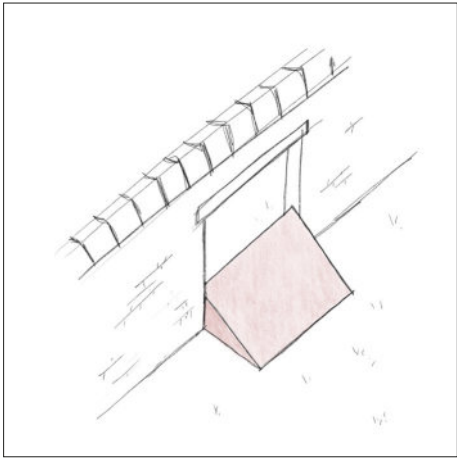
courir

sauter

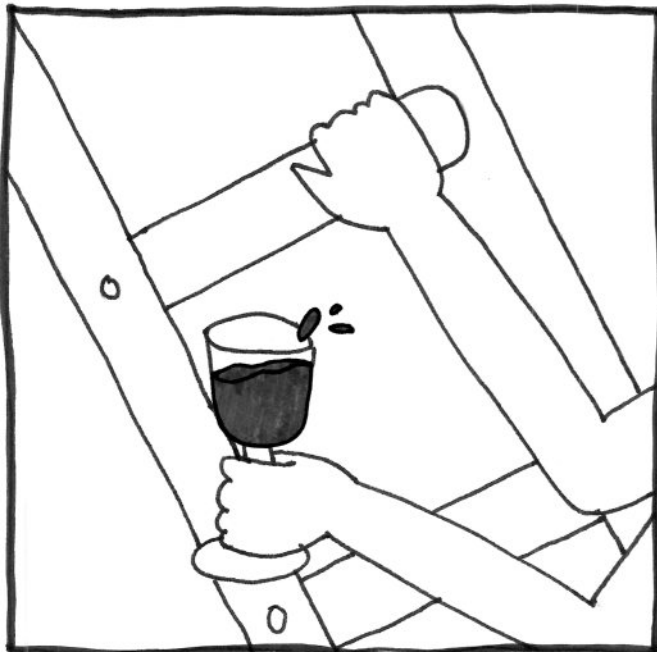
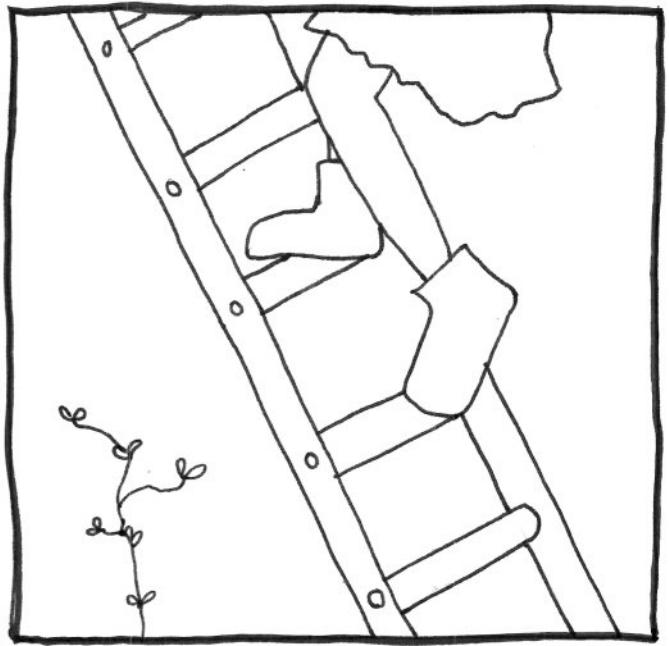
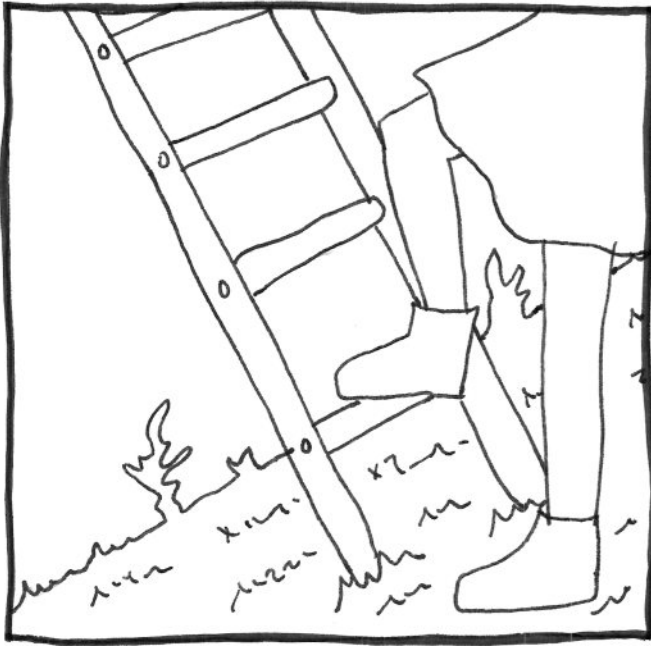
masquer

...

lier



LES HABITANTS D'EN FACE OU CHEERS



maquette poétique du mur

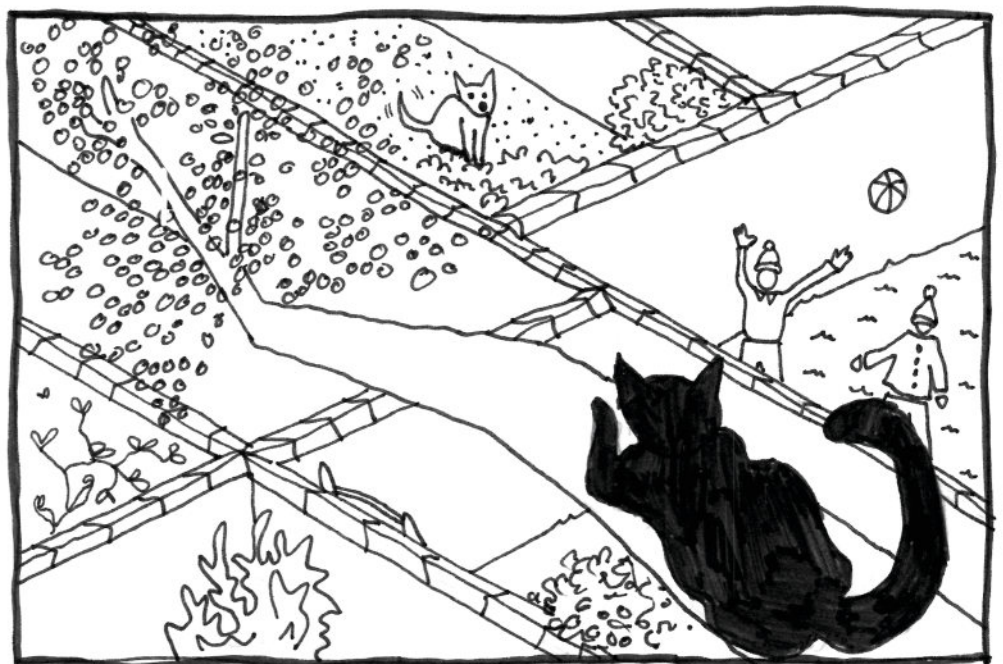
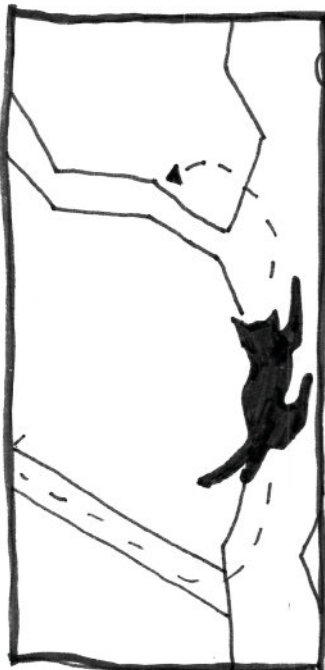
histoires im-brique-ées

maquette de plâtre - 1/20 - 25 x 25 x 17 cm

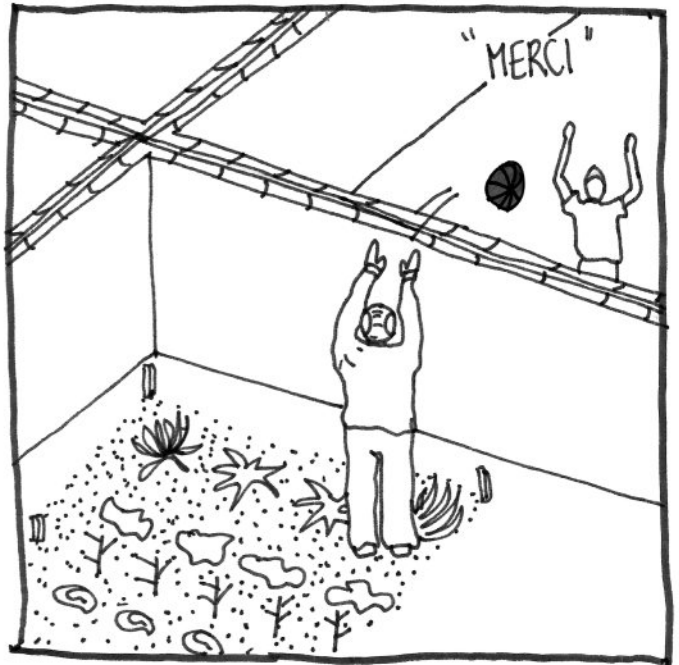
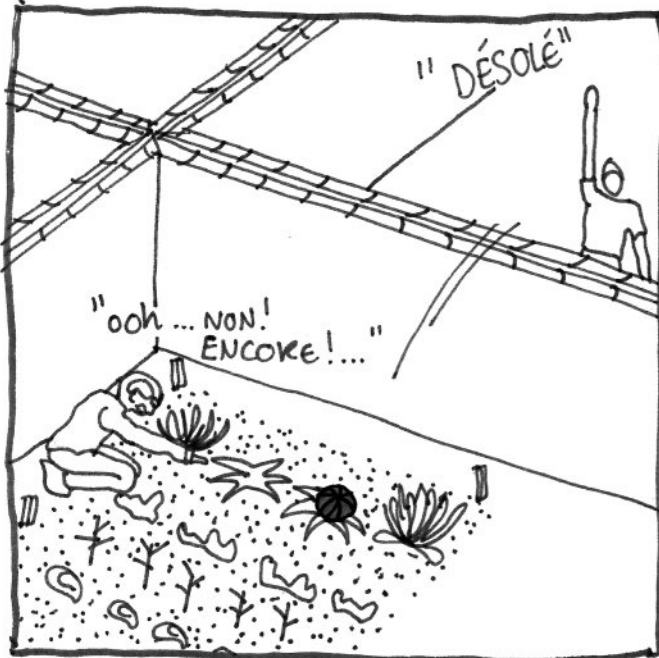
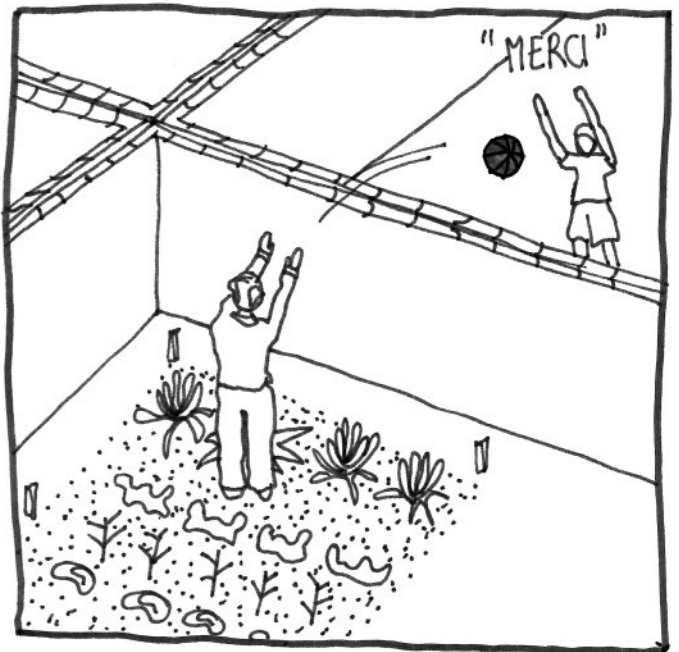
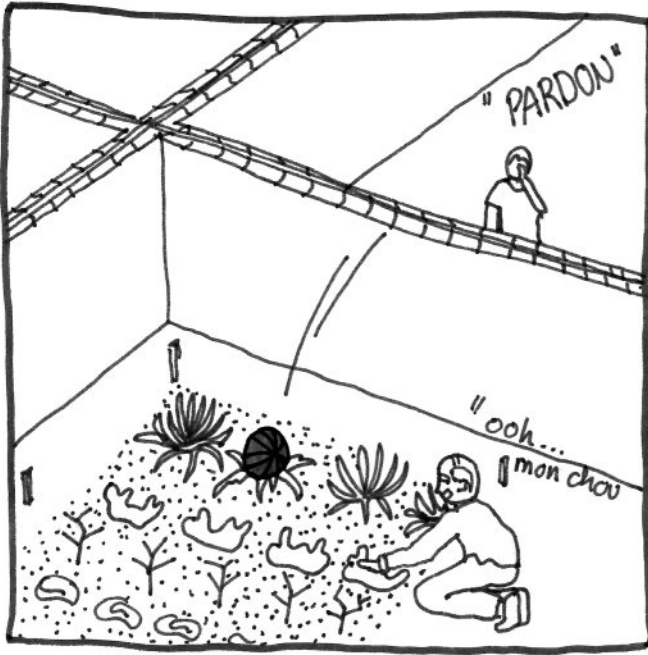




CATWALK ou CAT DE SURVEILLANCE ou CATVENTURES



Papy PATIENCE



visions abstraites d'au-delà du mur

la forêt : sur base de l'œuvre *Le Repas du Lion* (ca 1907) et *La Jungle équatoriale* (1909) par Henri Rousseau (le Douanier).

la montagne : sur base de l'œuvre *Le Styx ; Paysage de rochers* (1939) par André Bauchant; et de l'œuvre *Scene in Bagneux on the Outskirts of Paris* (1909) par Henri Rousseau (le Douanier).

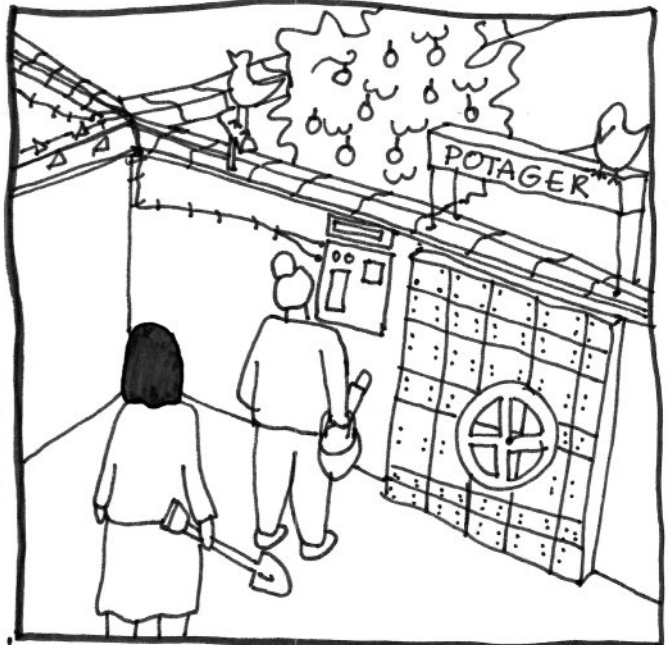
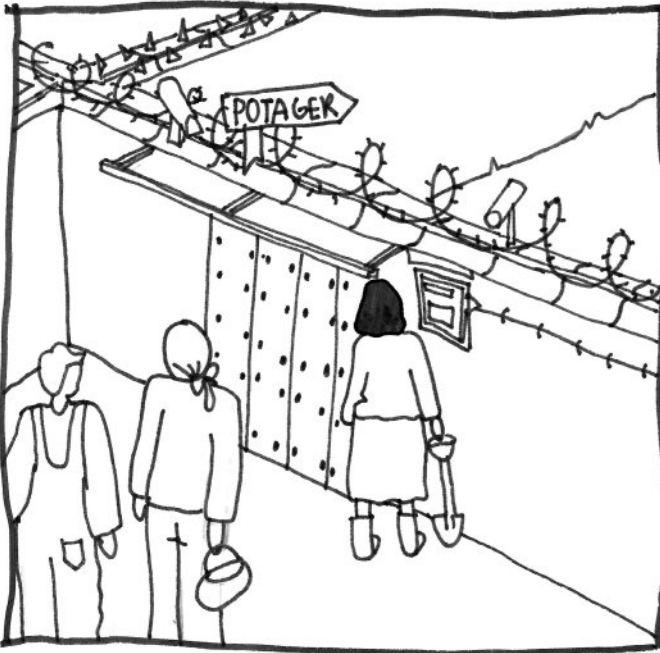
la crique : sur base de l'œuvre *Immensité bleue* (1943), *La falaise (?)* et *Après le bain* (1931) par Dominique Peyronnet;

collages numériques - A4 - 300ppp





H'ilôt tech. / Scan d'oeil. / Avez-vous l'autorisation?



LE CONFESSIONNAL

